



GOTSE DELCHEV MUNICIPALITY

MARKETING PROFILE

2006

CONTENTS

I. GENERAL

A. THE MUNICIPALITY

1. LOCATION
2. LANDSCAPE
3. SOIL
4. ORES AND MINERALS
5. FLORA
6. FREE AIR
7. WATER RESOURCES
8. FORESTS AND WILDLIFE

B. NEARBY SETTLEMENTS

II. POPULATION

1. DEMOGRAPHIC CHARACTERISTICS
2. UNEMPLOYMENT

III. INFORMATION ABOUT THE MUNICIPALITY

1. FORM OF MUNICIPAL GOVERNMENT
2. POLICE
3. FIREFIGHTING SERVICE
4. CIVIL DEFENSE
5. MUNICIPAL SERVICES, CONNECTED WITH THE TERRITORIAL PLANNING REQUIREMENTS

IV. MUNICIPAL SERVICES

A. EDUCATION

1. GENERAL INFORMATION
2. EXPECTED NUMBER OF SCHOOL LEAVERS
3. VOCATIONAL SCHOOL
 - 3.1 DIMITAR TALEV FIRST NEVROKOP VOCATIONAL SCHOOL
 - 3.2 P.K. YAVOROV SECOND VOCATIONAL SCHOOL OF AGRICULTURAL MECHANIZATION
4. COLLEGES/ UNIVERSITIES
5. QUALIFICATION AND RETRAINING COURSES

B. HEALTH CARE

1. IVAN SKENDEROV MULTI-FIELD HOSPITAL
2. SIMVOL NA NADEZHDA (SYMBOL OF HOPE) SPECIALIZED SURGICAL HOSPITAL
3. MEDICAL CENTER - 1
4. EMERGENCY CENTER

C. OPPORTUNITIES FOR RECREATION AND TOURISM

1. THE MUNICIPALITY

1.1 HOTELS

1.2 TOURIST AGENCIES

2. IN THE REGION

V. GENERAL INFORMATION

A. FINANCIAL INSTITUTIONS

1. BANKS

2. INSURANCE AND REINSURANCE COMPANIES

3. PENSION INSURANCE COMPANIES

B. HOUSING EXPENSES

C. ALTITUDE ABOVE SEA-LEVEL AND CLIMATE

D. WASTE DISPOSAL

VI. PUBLIC SERVICES

A. ELECTRIC POWER SUPPLY

B. NATURAL GAS

C. TELECOMMUNICATIONS

D. WATER SUPPLY

E. SEWERAGE

VII. TRANSPORT

1. HIGHWAYS AND ROADS

2. RAILWAY

3. AIRPORTS

4. WATERWAYS

5. ROAD TRANSPORT

6. COURIER SERVICES

7. CUSTOMS SERVICES

VIII. LOCAL TAXES

1. TYPE OF TAXES AND FEES

2. DOMESTIC WASTE TAX

3. FEES FOR USE OF MARKETS, FAIRS, SQUARES, ETC.

4. REGISTRAR SERVICES

5. PERMITS AND LICENSES

6. QUARRY DEVELOPMENT FEES

7. OTHER FEES

IX. COMPANIES

1. NUMBER OF REGISTERED COMPANIES

2. BASIC DATA ABOUT STRUCTURE-DECIDING COMPANIES
TEXTILE INDUSTRY

SHOE INDUSTRY
CHEMICAL INDUSTRY
FOOD AND BEVERAGES INDUSTRY
OTHER INDUSTRY

- X. EXPANSION OF EXISTING COMPANIES
- XI. CLOSED DOWN COMPANIES
- XII. TRADE UNIONS
- XIII. SPECIAL BUSINESS INCENTIVES
- XIV. MAIN EMPLOYERS IN THE SPHERE OF SERVICES

I. GENERAL INFORMATION

A. THE MUNICIPALITY

1. Location

Gotse Delchev Municipality is located in the Southwest Bulgaria in the valley of Mesta river. The region is mainly of mountain character and borders the municipalities of Hadzhidimovo, Garmen, Bansko and Sandanski. It includes the municipal center, town of Gotse Delchev, (22 560 residents) and 10 villages: Musomishte, Delchevo, Bukovo, Borovo Kornitsa, Lazhnitsa, Breznitsa, Gospodintsi, Banichan and Dobrotino. The municipality occupies an area of 315.8 sq.km. The municipal center is 150 km away from the regional center Blagoevgrad and 203 km away from the capital Sofia. The nearest sea port at the White Sea – Kavala (Greece) is 95 km away.



2. Landscape

The landscape of the region of Gotse Delchev Municipality is highly diverse. The highest point is 2709 m above sea-level in the Pirin mountain and the lowest point – about 430 m above sea level in the Gotsedelchev valley. The most impressive land shapes are the alpine south parts of North Pirin with the three southernmost cirques – the Kamenishki cirque with its six lakes, the Breznishki cirque with three lakes and the Kornishki cirque with two lakes. Peaks with clearly expressed alpine nature raise above them – Changel chal,

Kadiev rid, Demir chal, Hlaven, Boykov vrah. Alpine outline has also the Orelyak peak, raising alone and being the highest peak in the Middle Pirin Mountain. The medium-high parts of the beautiful forest-clad South Pirin, are very interesting. An important tourist object in the region is Ali botush – the most clearly expressed sheaved-like mountain in Bulgaria .

To the east the Gotsedelscheska valley is closed by the Rhodopi mountains. The west part of the mountain has alpine outline, which is a combination of quite high rounded mountain peaks and deep, complex net of beautiful canyons and well-shaped valleys. The greater part of the mountain is afforested by coniferous and broad-leaved wood, the slanting slopes of which form beautiful natural meadows and pastures.

Near the town of Gotse Delchev it is interesting to see the canyon of Kanina river and the canyon-like shape of Delchevska river. The variety of the land shapes is complemented by the Momina klisura gorge and the Bistritsa river gorge.

Against the background of the well expressed mountain parts stands out the very beautiful Gotsedelchevska valley with attractive fractures, from which numerous mineral springs spout out. The tributaries of Mesta river have lined the mountain slopes with narrow gorge valleys, which are the main potential for route-cognitive tourism.

The numerous rock crowns, mountain peaks, glacial lakes, canyon-like valleys, isolated heights as well as many other surface and underground formations represent the great natural tourist potential of Gotse Delchev Municipality.

3. Soil

Brown and cinnamon forest soils dominate, which are appropriate for growing tobacco, potatoes, and grain crops. In the higher parts dominate mountain meadow soils and near rivers – alluvial and deluvial meadow soils.

4. Ores and minerals

The Gotse Delchev Municipality is poor of ores and minerals, but it is rich of water and forest resources. Valuable natural resources are the marble deposits, which give raw materials for the processing industry, in which local and foreign companies operate. Great variety of building materials is available, of which the most demanded material is gneiss.

Mesta river and its 13 tributaries run across the territory of the municipality. The municipality has great potential as to thermal mineral water flow – 100 l/ sec. The main source is in the field of

Mosomishte village, but it is not the only one in the region. Such fields are available also on the land of Banichan village.

5. Flora

The municipality is in the group of the so-called municipalities with "dominating forest land fund", in which the forest fund exceeds 60%.

Part of the Pirin National Park is located on the territory of Gotse Delchev Municipality. The park accommodates under protection about 2000 plant species /110 of them are included in the Bulgarian Red Book/. The Orelyak Reserve includes more than 751 ha virgin beech forests and valuable wood species.

6. Free air

The territory of the municipality and the Gotse Delchev region are free of manufacturing facilities, which have permanent or bursting sources of air pollution. A decisive factor for the high quality of air in the region is the abundant forest plantation.

7. Water resources

The Gotse Delchev region is among the richest regions in water in Bulgaria. The main sources are the surface and underground waters.

Rivers

The region is situated entirely in the valley of Mesta river and its tributaries. Mesta river rises in the southern slopes of the Rila mountain and its upper part runs between Rila mountain and Rhodopi mountain, further it cuts through the western slope of the Dabrash hill of the Rhodopi mountain and forms the deep and picturesque Momina klisura gorge, and then it enters the Gotsedelchevska valley. The lower part of the river flows through Greece and flows into the Aegean Sea. The river is total of 273-km long, of which 125 km are in Bulgaria. It has 13 main tributaries, one of which is Kanina river.

Lakes

The lakes in the region are situated on the northeast slopes of the Pirin mountain and flow into the Mesta river through its tributaries. The greater part of them are accommodated on the bottoms of the cirques, formed during the glacier activity and usually form groups. The most attractive of them is the group of three lakes in the Breznishki cirque and three other quite small lakes in the Kornishki cirque. The average size of the lakes is about 150-are.

From the artificial lakes we have to mention the bigger water reservoirs near the settlements in the region. Three water reservoirs exist nearby Gotse Delchev in the foothills of the Pirin mountain.

Mineral springs

In the Gotse Delchev region there is a field of nitrogen thermal water, which springs out in the regions of Ogrnyanovo village, Germen village, Marchevo village and Zagrade village, located 10-km away from the town of Gotse Delchev. There are about 16 springs with total flow rate 120 l/sec. The mineral water of Ognyanovski springs is clear, odourless and with pleasant taste, with temperature about 39-43 degrees C.

The mineral springs in the Toplika country are about 4-km away from Gotse Delchev. They are about 10. The water temperature is always 22 ° C and doesn't freeze even during the coldest winter days. The flow rate is about 40 l/sec. The springs are situated in a picturesque country, with beautiful surrounding acacia wood, with panoramic view to the opposite Lyaskovski peak. The remains of the ancient Sudin grad Fortress are located nearby.

8. Forest and wildlife

Southwest Bulgaria is famous for its rich and various flora.

Pirin mountain zone

600-700-meter circle of elevation, known as the circle of oak woods, is well expressed on the west, south and partially on the east and north mountain slopes. It consists mainly of oak and hornbeam wood. Significant areas in the circle are occupied by the communities of pitch pine. A compact circle of beech wood is observed at a height of 900-1000 and 1500 m, even to 1800 m on the east slopes of Orelyak peak. In all parts of the Pirin mountain a wide and compact circle of coniferous forest is present. It begins at 1500-1600 m above the sea level and ends up 2000-2200 m. The communities of white pine occupy the widest territories of the circle. Quite widely are distributed the communities of the ordinary spruce and the white fir. The circle above 2000 m is covered with scrub pine and juniper bushes.

About 70 endemic species are present in the Pirin mountain.

Slavyanka mountain zone

The flora of Slavyanka mountain is similar to the flora of the Pirin mountain, and the specific feature is the presence of more than 30 Bulgarian endemic species, 10 of which are available only in this zone.

Rhodopi mountain zone

The circle from 600 to 800 m is covered mainly with willow-poplar-alder wood. The circle from 800 to 1300 m is occupied mainly

with woods of durmast, beech and spruce. The highest circle – from 1300 to 1900-2000 m, is covered with beech, fir and spruce wood.

The region of Gotse Delchev Municipality is characterized with optimum proportion of wood, grass and agrarian land, which is an important precondition for the development of animal populations. Several main game species are present: wild boar, red deer, hind;

In the region are present also foxes, badgers, jackals, land turtles, cat snake, wild cat, alpine rook, wild pigeon, mountain trout.

B. NEARBY SETTLEMENTS

	Town	Transport (railway, airport, harbor)	Distance
1	Sofia, capital	railway, airport	210 km
2	Plovdiv	railway, airport	180 km
3	Varna	railway, airport, see harbor	590 km
4	Bourgas	railway, airport, see harbor	480 km
5	Rousse	railway, airport, river harbor	480 km
6	Blagoevgrad	railway	103 km
7	Kavala, Greece	railway, airport, see harbor	120 km
8	Tessaloniki, Greece	railway, airport, see harbor	287 km

II. POPULATION

1. Demographic characteristics

The population of the municipality according to data from the most recent census was 32 784

Population by years	1975	1985	1992	2001	2005
Gotse Delchev Municipality	28915	32110	33074	32571	32782
Blagoevgrad region	321854	344195	351637	341173	334907

residents, of which 50.5% female. The population density in the

municipality is 103.8 persons per square km, which is above the average for Bulgaria /71,8 persons per sq.km/. 20 533 persons live in the town of Gotse Delchev.

12 251 persons live in the villages, which is 37% of the total population.

Data: NSI, 31.12.2005 year

№	Settlements	Population-number			Age structure		
		Total	Men	Women	under18 years	between 18-62	up 62 years
1	Gotse Delchev	20 533	10 046	10 487	4 866	13 172	2 495
2	Breznitsa	3 354	1 705	1 649	996	1 970	388
3	Mosomishte	2 344	1 172	1 172	541	1 489	314
4	Kornitsa	1 671	843	828	462	974	245
5	Lazhnitsa	1 443	760	713	425	892	126
6	Borovo	1 226	614	612	275	754	197
7.	Banichan	765	378	387	102	530	133
8.	Bukovo	889	425	464	270	551	68
9	Gospodintsi	434	223	211	112	274	48
10	Delchevo	93	42	51	2	26	65
.							
11	Dobrotino	53	20	33	6	24	23
.							
Total:		32 784	16 227	16 557	8 047	20 636	4 101

During the recent years there is a trend of population decrease, connected mainly with the migration to the neighbouring Turkey. That refers mainly to the villages. At the same time there is a trend of population increase in the town of Gotse Delchev, resulting mainly from the migration of people from the villages.

The natural population growth in the municipality is still positive 0.46%, which is higher than the average value for Bulgaria. The birth rate also exceeds the average for Bulgaria /10.45% compared to 8.8%/, and the death rate is lower – 9.96 deceased per 1000 residents compared to 13.6 for Bulgaria.

The age structure of the population in the municipality is more favorable than the average age structure for Bulgaria.

- active population - 19 272 persons i.e 58.9%;
- below active age - 7 183 persons i.e. 22%;
- above active age - 6 261 i.e. 19.1%

2. Unemployment

In April 2006 the **unemployment level** in the municipality was 6.22 %, which is lower than the average rate for the region and for Bulgaria. The number of unemployed is 1059 persons. The bigger part of registered unemployed – 54.95 %, are male.

	Number of registered unemployed	Unemployment %
Gotse Delchev Municipality	1059	6,22
Blagoevgrad Region	15095	8,84
For Bulgaria	378 920	10,23

Source: Labor Bureau, town of Gotse Delchev

As to education most of the unemployed have primary education – 47.21 %, and the least is the share of university graduates – 2.29 %. Approximately every third registered unemployed /30.21%/ is continuously unemployed and is registered as unemployed for more than 1 year. People with reduced working capacity are 97 /9.15%/

	Education				Age structure /years/			Continuously unemployed for more than 1 year	With reduced working capacity
	university education	high special high vocational	primary	elementary or lower	Up to 29	30 – 44	Above 44		
Gotse Delchev Municipality	56	444	500	59	215	311	533	320	97

The share of unemployed young people up to 29 years old in the municipality is 20,3% and is comparable to the share for the region (20,24%) and for Bulgaria (23,53%). The percentage of continuously unemployed is comparatively low (registration at the Labour Bureau for more than 1 year) – 30,21%, compared to 45,75% for the region and 57,41% for Bulgaria.

The input flow of newly-registered or re-registered unemployed at the Labour Bureau Directorate – town of Gotse Delchev in April 2006 amounts 158 persons, of which 59 women.

In April 2006 the employers in the Gotse Delchev Municipality, through the agency of the Labour Bureau, announced 176 vacant job positions. Most of them – 94.98 % are for people with no specialty and occupation. The ratio between the number of unemployed and the vacant jobs is 6 : 1.

III. INFORMATION ABOUT THE MUNICIPALITY

1. FORM OF GOVERNMENT

According to the law of the Republic of Bulgaria, the Gotse Delchev Municipality is a legal entity with ownership right and an independent budget. It is a main administrative – territorial unit, in which self-government is executed.

The local self-government authority in Gotse Delchev Municipality is the Municipal Council, which is elected by the residents of the municipality as provided by law. It is an authority, which organizes and carries out its activity on the basis of the Constitution of the Republic of Bulgaria, the Local Self-government and Local Administration Act.

The Municipal Council – Gotse Delchev consists of 29 municipal councilors, elected by the population of the municipality. It decides on the policy of the municipality as to the local self government, the economic development, the municipal property, the municipal finance, health service, education, culture, social support for the population, public works and public services, sport, recreation and tourism, territorial planning and development, as well as environmental protection.

The municipal Council shall adopt Regulations on organization and activity of the Municipal Council and the municipal administration, which shall settle the issues, related to organization and functionality of the Municipal Council and its commissions, the municipal administration, the municipal association, as well as any matters, explicitly specified in the Local Self-government and Local Administration Act.

The following permanent commissions will operate with the Municipal Council:

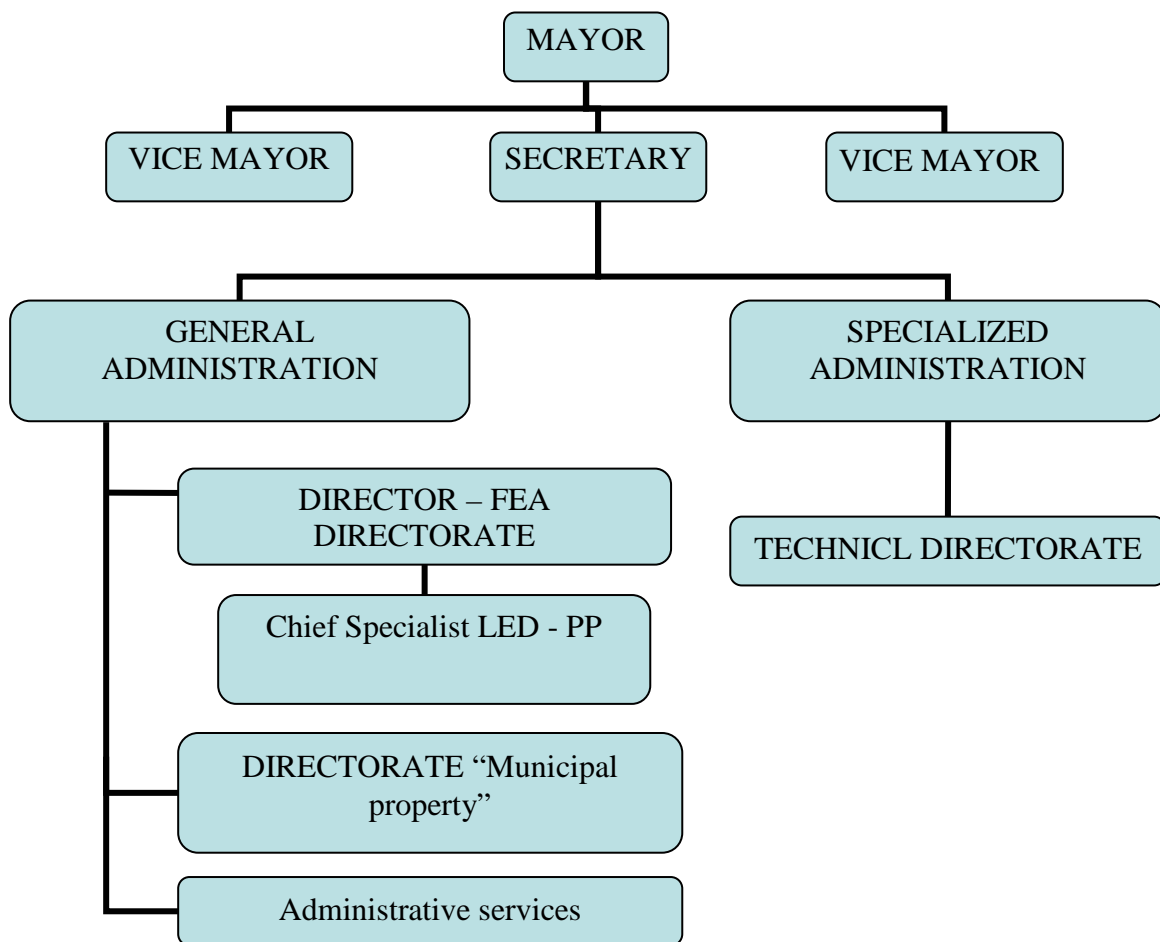
1. Budget, finance and investment policy;
2. Municipal property, privatization and post-privatization control;
3. Territorial planning, natural resources and ecology;
4. Health, social services, mass sport and tourism;
5. Youth, education, cultural and historical heritage, religions and names;
6. Agriculture, forests and water;
7. Law, public order, transport, traffic organization, proposals, requests and complaints of citizens;
8. European integration, international projects, cross-border and regional cooperation.

The executive body in the municipality is the mayor of the

municipality.

He/she is elected directly by the population. He/she governs the overall executive activity of the municipality, directs and coordinates the activity of the specialized executive bodies and represents the municipality before any physical persons and legal entities and before the court.

The structure of the Municipal administration is subject to optimization and approval by the Municipal Council.



2. POLICE

The defense of the national security and public order, crime counteraction, protection of the rights and liberties of the citizens and protection of their lives, health and property, ensuring fire safety and emergency response and protection of the economical and financial system of the state and its cultural values are the main priorities and goals of the Regional Police Directorate and the Regional Fire Safety and Emergency Department – Gotse Delchev, which are structures of the Ministry of the Interior of the Republic of

Bulgaria on the territory of Gotse Delchev Municipality and the neighbouring municipalities Satovcha, Garmen and Hadzhidimovo.

Within the Regional Police Department in the town of Gotse Delchev, police stations have been established in the three neighbouring municipalities.

RPD – Gotse Delchev is secured with the required technical and special means to ensure 24 hours protection of public order and property through its police structures. The sector “Signal Security Activity” provides 24 hours security guarding of 180 objects, whereas the time for arrival of the patrol group after registration of illegal entering into the guarded object is 2 to 3 minutes.

The sector Automobile Traffic Control carries out monitoring and control of the traffic and the observance of the Traffic Act and in case of traffic accidents or accidents of general criminal nature, it sends immediately operative-investigating groups at the place of the accident.

The structure of RPD Gotse Delchev includes also the sector Control on General Dangerous Means, which controls manufacture, trading, acquisition, safekeeping, carrying and use of general dangerous means (explosives, arms and ammunitions).

RPD – Gotse Delchev, jointly with the Municipal Administration has formed a Commission for fighting the anti-social activities of juvenile and underage, which keeps records and in case of multiple criminal activities, together with the parents of the guilty children, carries out preventive actions by changing the living environment and the place of residence for the purpose of reducing the criminal activities.

3. FIREFIGHTING SERVICE

The Regional service for fire safety and defense of the population – Gotse Delchev, prevents the occurrence of fires and failures and eliminates their consequences on the territory of the settlements, the Forest fund and the Agricultural fund. The personnel of the Regional service includes 35 employees. It has 4 firefighting cars, as well as the required equipment and special means for the performance of its duties. The signaling system is centralized in the town of Gotse Delchev. The service operates on four-shift mode of 6 hours per shift, since it serves the territory of the four municipalities. The remotest settlement is 60 km away with max response time up to 30 minutes.

4. CIVIL DEFENSE

The objectives of the Civil Defense in the municipality include the activities for defense of the population and the national

economy in case of disasters, failures and accidents.

The main activities of the Civil Defense in the municipality include:

- analysis of the condition and the preparedness of the companies and enterprises to prevent and eliminate the consequences of disasters, failures and accidents in the municipality and development of programmes, plans and measure for improvement of the preparedness;

- organization and carrying out preventive activity for prevention and mitigation of harmful consequences from disasters, failures and accidents;

- establishment and maintaining the readiness of the management bodies and formations for carrying out rescue and emergency restoration works in case of disasters, failures and accidents;

- planning, organization, management, coordination and control of the provision and participation of formations and means in the rescue and emergency restoration works.

The structure on the regional level is the Civil Defense Directorate.

On municipal level the tasks are organized by a chief inspector, who is within the composition of the directorate. The civil defense activities in the municipality are managed by a permanent municipal commission with the Municipal administration. There is a staff providing support for the operative work of the commission.

The created Civil defense formations in the municipality are secured with personnel, protection means and equipment. For that purpose the resources of the main companies in the municipality are used, as well as the provided for use material assets, property of Civil defense .

5. MUNICIPAL SERVICES, CONNECTED WITH THE REQUIREMENTS FOR TERRITORIAL PLANNING AND STRUCTURE

The municipal service, responsible for the application of the requirements for territorial planning and structure in Gotse Delchev Municipality is the Territorial Planning Directorate

Fees are collected for the technical services, provided by the Municipal administration, covering the activities in connection with the territorial and town planning, architecture, cadastre and out-of-town territories, according to §3 of the Additional regulations of the Territorial Planning Act (TPA).

The fees for technical services are paid by physical persons and legal entities that use the services at the time of filing a request or at the time of service provision.

The state and municipal authorities, the budget organizations and the Bulgarian red cross are exempted from fees for technical services.

The size of the fees for technical services is determined on the basis of the required material & technical and administrative expenses, connected with the service provision.

Fees for technical services

The fees for technical services are as follows:

1. for issue of a sketch plan of a property – 15.00 BGN.;
2. issue of a sketch plan covering more than one property – 20.00 BGN;
3. for issue of a sketch plan of a property with a specified way of building – 20.00 BGN;
4. issue of a sketch plan covering more than one property with a specified way of building – 25.00 BGN;
5. certification of sketch plans, issued more than 6 months ago – 5.00 BGN;
6. for issue of a certificate for facts and circumstance, related to territorial and town planning – 10.00 BGN;
7. certification of copies of documents – 5.00 BGN
8. certification of copies of plans and the accompanying documents – 10.00 BGN ;
9. for issue of a permit for temporary commercial equipment – tables, pavilions, cabins, etc. – 15.00 BGN;
10. for issue of a building permit for new buildings – 4 ‰ of the building value;
11. for issue of a permit for general repair and reorganization of existing buildings and premises in such building, without building papers – 15.00 BGN;
12. For issue of permits for use of buildings of fourth category:
 - a/ private roads, streets from the secondary street network V and VI class and the related facilities – 75 BGN/m², but not more than 1 500 BGN;
 - b/ residential and mixed medium-rise buildings, buildings and facilities for public use with total floor area from 1000 to 5000 m², or with capacity for 100 to 200 visitors – 250 BGN;
 - c/ manufacturing buildings with capacity from 50 to 100 workplaces and the related equipment – 250 BGN;

d/ reconstructions, reorganizations, general repairs and change of the function of buildings of that category – 250 BGN;

e/ parks and green areas up to 1 ha – 150 BGN;

f/ interior reconstructions of buildings from first to fourth category, without affecting their construction – 250 BGN;

13. For issue of permits for the use of buildings of fifth category:

a/ residential and mixed low-rise buildings, villas, buildings and facilities for public use with total floor area up to 1000 m² or with capacity for up to 100 visitors – 125 BGN;

b/ manufacturing buildings with capacity up to 50 workplaces and the relevant facilities – 150 BGN;

c/ buildings from supplementary development, other than those of sixth category – 100 BGN;

d/ reconstructions, reorganizations, general repairs and change of the function of buildings of that category – 100 BGN;

The term for the provision of technical services is five days. In case of failure to keep that term, the amount of the fee is decreased by 1 % a day, starting from the day of delay but not by more than 30 % of the full amount. At present express service for issue of documents for the above-listed technical services is not offered.

IV. MUNICIPAL SERVICES

A. EDUCATION

1. General information

There are 15 schools in Gotse Delchev Municipality. The schools in the municipal center are: 3 high schools /1 technical and 2 vocational schools/, 3 primary schools, 1 school for children with special needs and 1 Home for upbringing and caring for children, deprived of parental care. The preschool preparation on the territory of the municipality is carried out in 1 nursery, 10 kindergartens and in half-day and preparatory groups in some schools in the villages.

- Number of elementary schools – 3
- Number of primary schools – total 9: in the town of Gotse Delchev (3) and in the villages (6)
- Number of high schools – 2

- Yane Sandanski High School of Mathematics and Natural Sciences, town of Gotse Delchev, 4, Skopie Str. ☎ 0751/60306, 60332, e-mail - pmg-gd@pirin.com,; <http://www.pmg-gd.com>

- Sv.Sv. Kiril & Metodiy High General School, Breznitsa village, ☎ 07529/2071 - principal, e-mail soubreznica@mail.bg, <http://soubr.hit.bg>

- Number of high vocational schools – 2

- Dimitar Talev Nevrokop Vocational School, town of Gotse Delchev, 36, G. Delchev Blvd ☎ 0751/60151 – principal, e-mail - office@npg-gd

- P. K. Yavorov Vocational School of Agricultural Mechanization, town of Gotse Delchev, 6, Simeon Radev Str. ☎ 0751/60461, 60463, e-mail – pg_po_mss@abv.bg

2. Expected number of school-leavers from the high schools during 2006/2007 school year

- Yane Sandanski High School of Mathematics and Natural Sciences - 127

- Dimitar Talev Nevrokop Vocational School - 167

- P. K. Yavorov Vocational School of Agricultural Mechanization - 127

- Sv.Sv. Kiril & Metodiy High General School - 22

Percentage of school-leavers, who continue education in higher schools:

High school name	School year		
	2002/2003	2003/2004	2004/2005
Yane Sandanski High School of Mathematics and Natural Sciences	87%	67%	72%
Dimitar Talev Nevrokop Vocational School	52%	55%	60%
P. K. Yavorov Vocational School of Agricultural Mechanization	-	-	-
Sv.Sv. Kiril & Metodiy High General School	-	-	-
Average percentage for the municipality:	-	-	-

3. Technical schools

Number of students in vocational schools –
 for 2006 2005 2004
294 students **317** students **276** students

Number of teachers in vocational schools –
 for 2006 2005 2004
125 **124** **124**

3.1 Dimitar Talev Nevrokop Vocational School, town of Gotse Delchev

a) Fund of buildings:

- Main building – 2397m²
- Auxiliary building -685 m²
- Gymnasium – 325m²

b) Team of teachers in 2005-2006: 68 teachers

c) Admission:

Specialty:	2004/2005	2005/2006
1. Accounting	1 class	1 class
2. Economic computer science	1 class	2 classes
3. Design, modeling and technology of textile clothes	1 class	1 class
4. Manufacture of textile clothes	1 class	1 class
5. Computer engineering and technology	1 class	1 class
6. Industrial electronics	1 class	1 class
7. Machines and facilities in tailoring and shoe industry	1 class	-
8. Electrical machines and devices	-	1 class
Total (number of classes)	7	8

d) Expenses for training (on the basis of hours/ days) – maintenance of one student

Specialties by fields	Maintenance of 1 student in BGN	Classes	Number of students	TOTAL BGN
I. Electrical engineering, electronics and automation of machine manufacturing				
1. Electronic equipment	195,10	4	93	18144,30
2. Computer engineering and	195,10	2	53	10340,30
	195,10	2	52	10145,20

technology	195,10	1	19	3706190
3. Industrial electronics				
4. Fitter of machines, devices, units and facilities	195,10	1	24	4682,40
5. Machines and facilities in tailoring and shoe industry	195,10	1	23	4487,30
6. Fitter of electrical machines, apparatuses, units and devices	195,10	1	29	5657,90
7. Electrical machines and devices	170	4	94	15980
II. Light industry	170	2	53	9010
1. Modeling and design of clothes	170	2	52	8840
2. Technology of clothes				
3. Design, modeling and technology of clothes and textile	170	2	51	8670
4. Manufacture of textile clothes	136	5	127	17272
III. Economy and management	136	1	25	3400
1. Accounting	136	3	73	9928
2. Economic management				
3. Economic computer science				
TOTAL:	x	31	769	130264, 30

e) Students that acquired high special education in the school:

Specialties	Number of students 2003/2004	Number of students 2004/2005	Number of students 2005/2006
1. Economic management	-	26	25
2. Accounting	19	20	26
3. Business administration	23	20	
4. Modeling and design of clothes	-	-	25
5. Technology of clothes	-	27	28
6. Electronic equipment	49	50	44
7. Fitter of machines, apparatuses, devices and equipment	-	30	19
8. Fitter of electrical machines, apparatuses, devices and units	25	22	-
9. Radio and TV engineering	22		
TOTAL:	138	195	167

3.2 P. K. Yavorov Vocational School of Agricultural Mechanization, town of Gotse Delchev

a) Fund of buildings:

- Main building – 2308m²
- Auxiliary building -1924 m²
- Gymnasium – 758m²
- Mochura school center -1334 m²
- Cowshed – 132 m²
- storehouses- 59 m²

b) Team of teachers 2005-2006:

57 teachers

c) Admission:

Specialty:	2004/2005	2005/2006
1. Technology of tobacco and tobacco research	1 class	1 class
2. Economy of agriculture	1 class	1 class
3. Farmer		1 class
4. Fitter of agricultural equipment	2 classes	2 classes
5. Operator in manufacture of bread and pastry and confectionary.	1 class	1 class
6. Waiter - barman	1 class	1 class
TOTAL /classes/:	6	7

d) Costs for training (on the basis hours/ days) – maintenance of one student according to Minister's Decree

Specialties by fields	Maintenance of 1 student	Classes	Number of students	TOTAL BGN
1. Technology of tobacco and tobacco research	-	5	109	-
2. Economy of agriculture	-	4	97	-
3. Farmer	-	3	64	-
4. Fitter of agricultural equipment	-	8	187	-
5. Operator in manufacture of bread and pastry and confectionary.	-	6	141	-
6. Waiter - barman	-	2	48	-
TOTAL:	x	28	646	

e) Students that acquired high special education in the school:

Specialties	Number of students 2003/2004	Number of students 2004/2005	Number of students 2005/2006
1. Technology of tobacco and tobacco research	17	13	12
2. Economy of agriculture	25	22	26
3. Farmer	8	9	16
4. Fitter of agricultural equipment	42	38	35
5. Operator in manufacture of bread and pastry and confectionary.	46	40	38
TOTAL:	138	122	127

4. Colleges/universities within 100 km distance

Within 200 km from the Gotse Delchev Municipality are the academic centers of Sofia, Blagoevgrad and Plovdiv.

The nearest college is the Balkan College of Tourism – town of Bansko, which in 2006 admitted 200 students in the majors: Hotel and Restaurant Organization and Management, Organization and Management of Tourist Service, Business Administration, Economics.

5. Qualification and retraining courses, organized by:

a) Labor Bureau, town of Gotse Delchev organizes qualification and retraining courses in case of proven production needs.

b) Business incubator – organizes qualification and retraining courses in tourism, tailoring, computer knowledge, foreign languages

c) Scientific and Technical Union organizes and carries out specialized vocational courses and training.

B. HEALTHCARE

1. Ivan Skenderov Multi-field Hospital for Active Therapy, town of Gotse Delchev

The hospital serves the population from the municipalities Gotse Delchev, Satovcha, Garmen, Hadzhidimovo. It has two hospital buildings and one administrative building.

The hospital structure includes the following wards:

- Reanimation
- Gynecology, Neonatology
- Surgery
- Traumatology
- Neurology
- Internal Diseases
- Pediatrics
- Infections Diseases
- Nephrology
- Haemodialysis Center
- Clinical laboratory
- Microbiological laboratory
- Radiology

The hospital has 258 beds, the cost of one bed-day is 3,60 BGN
The service personnel includes:

- Medical doctors - 47
- Nurses -104
- Laboratory assistants - 15
- Other employees - 90

In 2006 a contract with the Health Insurance Fund for 126 clinical routes was signed.

2. Simvol na Nadezhda Specialized Surgical Hospital

Simvol na Nadezhdata Surgical Hospital is a private clinic, with main field Endocrine Surgery and is located in the town of Gotse Delchev. The clinic was licensed by the Ministry of Health on 27 December 2001. In the clinic are routinely applied modern operative methods in the surgery of thyroid gland, such as:

- a/ Minimum invasive open-type neck surgery
- b/ Minimum invasive video-assisted surgery of thyroid gland

c/ One-day surgery of thyroid gland

d/ Compulsory identification and divulsion of vocal nerves

The clinic occupies 1200 m² useful area and has its own computer network, central system for medical gases, central ventilation and air-conditioning system, own generator set.

- I. Ground floor, which accommodates:
 - Clinical and hormonal laboratory BODIMED, Gotse Delchev branch;
 - Sterilization sector, laundry, communal premises, boiler room;
- II. Outpatient department – located on the first floor and consisting of:
 - Registry;
 - Three fully equipped consulting rooms and surgical manipulatory room, furnished with modern echograph equipment and modular work stations of "Lampertz", each with personal computer;
- III. X-ray sector – furnished with graphic X-ray apparatus and orthopantomograph.
- IV. Hospital unit – located on the second floor and consisting of:
 - two hospital rooms with two beds each, each with bathroom;



- a room for visitors and recreation;
 - kitchen unit;
 - rooms for the personnel;
 - room for the nurse on duty;
 - chapel;
- V. Surgical unit + reanimation unit, located on the third floor and consisting of:
- two operating rooms /aseptic and septic/, air-conditioned;
 - reanimation – two rooms with two beds each, fully equipped, each with bathroom and air-conditioning system;
 - storage premises;
 - a room for the personnel on duty;
 - a sector for urgent histodiagnosics, equipped with cryo-sector + microscope;
- VI. Administrative sector, located on the second semi-floor.
- VII. An apartment for visiting doctors, located on the third semi-floor, furnished according to EU standards.
- VIII. Installations floor – it accommodates the air-conditioning and ventilation systems.

3. Medical Center – 1 Ltd.

Medical Center –1 , town of Gotse Delchev, is a municipal company providing outpatient specialized medical aid to the population from the four municipalities in the following fields:

Dermatology and venereal diseases;

Gynecology

Gastroenterology

Children's diseases

Neurology

Cardiology

Orthopedics and traumatology

Eye diseases

Psychiatry

ENT

Surgery

18 medical doctors and 17 nurse provide service to the patients

4. The Emergency center on the territory of Gotse Delchev provides service to the population from the four municipalities. It has 3 specialized cars and a staff of 32 persons.

C. RECREATION OPPORTUNITIES

1. The municipality

Gotse Delchev municipality offers various places for the nature lovers. On the bank of Delchevska river is situated the natural landmark Chinarbey (500-year old, 24 m high). 1.5-km to the west of the town of Gotse Delchev grow centuries-old chestnut trees Bliznatsite (the twins). The fish farm near Mesta river (3 km by road and 2 km by earth road to the northeast) offers attractive entertainments and delicious food in the fish restaurant.

On the territory of the municipality is situated the picturesque gorge of the Mesta river, named Momina klisura, 25-km long, connecting the Razlog valley and Gotse Delchev valley and separating Pirin mountain from the Dabrashki ridge of the West Rhodopi. The very beautiful sites of the Pirin National Park – the Kornishki cirque, the Breznishki cirque and the Kamenishki cirque occupy 1487.2 ha of the municipality area. The Orelyak Natural reserve is also situated here (758.1 ha - 751.5 ha wood and 6.6 ha meadows), famous for its virgin beech woods. The Popovi livadi resort area (1430 m above the sea level) is a convenient starting point to Orelyak (2.30-hour walk to the north by marked path) and the ridge of Debeli hill, surrounding the three cirques. The European walking route E 4 (the Pyrenees – Peloponnese) passes through that territory.

The town of Gotse Delchev may be a starting point for a trip to the famous national and international tourist center Bankso (32 km). Through the Popovi livadi country (climate mountain resort), walking along picturesque mountain paths one may go to the unique Pirin village (44 km), the Pirin Hut (61 km), the famous Rozhen monastery (79 km) and the Cultural and Historical Reserve Melnik (80 km).

1.1 Hotels

Nevrokop Hotel ***

The hotel is in the center of Gotse Delchev and has 19 single rooms, 51 double-rooms and 12 apartments, disco club, café-patisserie, lobby bar, night club, restaurant, garden restaurant.

Contact details: 1, Mihail Sntonov Str. tel: +359 751 2-69-50, 6-12-40. <http://www.hotelnevrokop.com/>, email: hotelnevrokop@abv.bg



Valentino Hotel ***



The three-star Valentino hotel is located at the exit of Gotse Delchev, 800 m away from the bus station and the town center. The Valentino Hotel has 28 double rooms, 3 three-bed rooms, 2 standard apartments and 1 presidential apartment. The hotel offers to its guests: restaurant with

200 seats, summer garden, tavern, Conference hall, Outdoor pool, Sport center, fitness hall, sauna, table tennis, billiard, open-air and indoor guarded car park.

Contact details: Gotse Delchev, Dunav str.- extension, tel. +359 751 60750

Baroto complex ***

3 km away from Gotse Delchev in the direction to the town of Dospat. It has two apartments and 20 double rooms, restaurant, fitness, sauna, outdoor swimming pool, car park, football ground and volleyball ground.

Contact details: tel. +359 751 61221, +359 89 7874360, <http://complex-baroto.domino.bg>
e-mail: complex_baroto@mail.bg



Hristov Hotel ***

The hotel has 50 beds (16 rooms and 3 apartments), restaurant, conference halls and bar.

Contact details: 2900 Gotse Delchev, 4, Byalo more Str., tel: +359 751 2 91 13, fax: +359 751 2 90 13, cell: +359 889 230324, <http://www.hhristoff.hit.bg>



Malamovata Kashta Maiz Hotel ** has 30 beds and is situated in the center of Gotse Delchev, 25, Hristo Botev Str.

Address: 2900 Gotse Delchev, 25, Hristo Botev Str., tel: +359 751 61230; 61231, fax: +359 751 61 232, cell. +359 888 314 825; 899 163 950; maiz@goicenet.net, www.goce.net/maiz

Aegea Hotel ** has 20 beds, a restaurant and a garden-restaurant. It is situated in the center of Gotse Delchev, 7, Targovska Str.

Bulgartabak Hotel is situated in the Popovi livadi resort, South Pirin, 18-km away from Gotse Delchev. It has 46 beds. Contacts: +359 751 60529, 60530

1.2 Tourist agencies with offices in Gotse Delchev

➤ **Oasis – A Tourist Agency**

Blagoevgrad, 9, Hr. Smirnenski Str., phone. +359 73 833058, fax: 73 887278, e-mail: oasis@avala.bg

Office Gotse Delchev – 5, Iliya Batakliiev Str., tel. +359 751 61007

➤ **Astron – C Tourist Agency**

Office – town of Gotse Delchev – 20, Solun Str., tel. +359 751 23041

2. In the vicinity

Delchevo village



View from Delchevo village

Architectural reserve. Situated 8 km away from Gotse Delchev, up in the Pirin mountain. The village has about 75 residents. Many houses are purchased by citizens from the town of Gotse Delchev and other towns, they have been restored and have become a wonderful place for living and recreation.

Excellent conditions for the development of “farm tourism”.

A house in Kovachevitsa villaae



Kovachevitsa village

Situated 25 km away from Gotse Delchev in the Rhodopi mountain. This is an architectural and historical phenomenon, valued as unique architectural heritage, together with the school of building and architecture in the Southwest Rhodopi, the center of which and the most bright representative – Kovachevitsa village.

Almost every house in Kovachevitsa has something special, which distinguishes it from the neighbouring houses and makes it a unique creation of the national architecture. Some houses have 3– 4 floors, with upper floors projecting outwards. In the past Kovachevitsa had

exceptionally well-developed for its time public utilities. Streets were stone-paved, sewerage system was available. A pipeline existed to supply water to public fountains. Most of the houses are restored at present and the old traditions have been preserved. In the village live more than 60 people from Sofia and other cities, who purchased and restored the houses. The village is known as the "Bulgarian Hollywood" because of the many movies, which are filmed there.

Leshten village

A house in Leshten village



The village is also declared architectural reserve. Many houses were restored and adapted to "farm tourism". It is visited by many tourists from Bulgaria and abroad. Situated 17 km away from Gotse Delchev, on the road to Kovachevitsa village.

Dolen village

A house in Dolen village



Architectural reserve. The narrow stone-paved streets and the characteristic old houses, built in the Revival style are very interesting. Houses are built with the typical bay-window on the second and third floor and interior design similar to the Revival houses in other settlements in Bulgaria. Some ceilings are wood-carved. The church, built in 1837 is of special interest for its amazing woodcarving, made by self-taught craftsmen. Situated in the Rhodopi mountain, 25 km away from the town of Gotse Delchev, to the direction of Satovcha village.

V. GENERAL INFORMATION

A. FINANCIAL INSTITUTIONS

1. Banks in the town of Gotse Delchev

Bulgarian Post Bank

2 "Iliia Batakliiev" str.

Tel: +359-751/60341, 69500

www.postbank.bg

Central Co-Operative Bank

13, "Bialo more"str.
Tel: +359-751-60205, факс 0751/60204
www.ccbank.bg

DSK Bank

3, "Targovska"str.
Tel: +359-751-60783, 60787, факс 0751/60782
www.dskbank.bg

Hebros Bank

12, "Tsaritsa Joanna"str.
Tel: +359-751-60122
www.hebros.bg

United Bulgarian Bank

32, "Targovska"str.
Tel: +359-751-60838
www.ubb.bg

BulBank

22, "Hristo Botev"str
Tel: +359-751-60202, 60203
www.bulbank.bg

Express Bank

3, "Targovska",
Tel: +359-751-60212, факс 0751/60218
www.sgexpressbank.bg

FIBank

1, "Al.Stamboliiski"str.
Tel: +359-751-60206, 60208 факс: 0751 / 60 209
www.fibank.bg

DZI Bank

4, "Polkovnik Drangov"
Tel: +359-751-60397
www.dzibank.bg/

EIBank

7, "Targovska",
Tel: +359-751-60226, 60225
www.eibank.bg

HVB Bank Biochim

"Targovska"25,
Tel: +359-751-60228, 60229
www.biochim.com

Raiffeisen Bank

4, "Bialo more"
Tel: +359-751-61322, факс 0751/60024
www.raiffeisen.bg

2.INSURANCE AND REINSURANCE COMPANIES

Allianz Bulgaria Insurance and Reinsurance Company

11, "Targovska",
Tel: +359-751-60497
www.allianz.bg

Bulstrad Insurance and Reinsurance Company

23, "Tsaritsa Joanna"str.
Tel/Fax: +359-751-60143
www.bulstrad.bg

DZI - State Insurance Institute

4, "Polkovnik Drangov",
Tel:+359-751/60037
www.dzi.bg

Armeec Insurance and Reinsurance Company

13, "Bialo more"str.,
Tel: +359-751-60891,
www.armeec.bg

Evroince Insurance Company

16, "Hristo Botev"str
Tel: +359-751-60391, 61050
www.euroins.bg

Vitoshka Insurance and Reinsurance Company

Tel: +359-751-61129
www.vitoshka.bg

3. PENSION INSURANCE COMPANIES

POC Doverie

10, "Hristo Botev"str
Tel: +359-751-61027
www.poc-doverie.bg

B. HOUSING EXPENSES

1. Purchase prices for houses/ apartments

Depending on the region, in 2006 the market price varied between 320 and 550 euro per 1 m² built-up area of new building. /source – D&D Real Estate Agency, Gotse Delchev, 11, Sestri Dukovi Str./

2. Rents

The average rent for a house/ an apartment is within 75 -150 euro /2006 /source - D&D Real Estate Agency, Gotse Delchev, 11, Sestri Dukovi Str/

C. ALTITUDE ABOVE THE SEA-LEVEL AND CLIMATE

The Pirin mountain and Mesta river valley are located in the transient Mediterranean climate region. Within the Pirin mountain the some changes of the Mediterranean effect occur as a result of the influence of the circles of elevation, outlining three climate sub-regions:

Mesta river valley	up to 1000 above sea level
Medium-mountain	from 1000 to 2000 m
Alpine	above 2000 m

The various land shapes affect the temperature mode and air humidity, wind speed and precipitation.

The average wind speed in the town is about 0.8 m/sec, and the hollow nature of the country determines the great number of windless days – 72 % of the days during the year on average.

The average annual temperature is 11.3-11.5°C, the average temperature in January is -2°C, and the average temperature in July - 19°C.

The average annual precipitation is between 620-780 mm, the maximum is in winter (secondary – in autumn). The month with maximum precipitation is November, and the driest month is August.

About 150 days a year are suitable for open-air agrarian works and tourism.

D. WASTE DISPOSAL

On the territory of Gotse Delchev municipality cleaning services includes three main directions:

- waste collection and waste transportation
- cleaning the regions for public use;
- neutralization and maintenance of the domestic waste dung-hills.

7 % of the municipal budgets is allocated to cover the expenses in these three directions.

On 1.01.2001 the new solid domestic waste dung-hill was put in operation in the town of Gotse Delchev. Its capacity is 99 860m³, built on 520-are area; the technology of sanitary disposal is applied there – by burying. Such facilities, complying to all European and world standards, were made for the first time in Bulgaria - 1996. The observations, carried out by specialists in that field – from the Ministry of Environment and Water – Sofia, the Environmental Executive Agency – Sofia and the Regional Inspectorate of Environment and Water – Blagoevgrad, show that the dung-hill operates well and meets all requirement and objectives, for which it was built.

As of 2006 72 % of the dung-hill capacity is used. Project for recultivation of the first cell is prepared, as well as design of a second cell of the dung-hill for solid domestic waste.

Detailed design, updated in 2001, is available for the closing of the old dung-hill, which is in the immediate vicinity of the new one. The tachymetric layout and the scheduled building and technical actions have been updated. The process of cleaning and elimination of abandoned and contaminated former dung-hills still continues. The terrains on the territory of Musomishte village, Borovo village and Bukovo village have been recultivated.

The building of a treatment plant for dangerous hospital waste is included in the schedule of Gotse Delchev municipality and if appropriate financing is found the project will be implemented. For the present the dangerous waste is deposited in the new dung-hill, where it is best protected and leakage of dangerous infiltrate in ground water is not allowed. Incinerator

Based on procedures provided in the Public Procurement Act, the activities of waste disposal were awarded to the following companies:

1. waste collection and waste transportation – SCHELLE Co – Sofia;
2. cleaning of the regions for public use – Aster C company – town of Gotse Delchev;
3. Waste disposal – REPACK Co. – Sofia;

Except Gotse Delchev municipality, the dung-hill serves also the three neighbouring municipalities – Satovcha, Garmen and Hadzhidimovo, for which these municipalities pay fee for waste disposal to the Gotse Delchev municipality.

The waste collection and waste transportation is scheduled twice a week. Waste collection is carried out with specialized waste-collecting equipment, the vessels are of Beaver type, the buckets – Neva type and 4-m³ big containers.

VI. PUBLIC SERVICES

A. ELECTRIC POWER SUPPLY

The electric power supply of the municipality is provided by the Electricity Distribution Co. - Sofia region

Prices of electric power for domestic needs

Day zones	Monthly consumption	Price (BGN/ kWth)
Day	Up to 75 kWth	0.098
	More than 75 kWth	0.174
Night	The total consumption	0.093

Prices of electric power for business and public users

Method of metering	Day zones	Price (BGN/ kWth)	
		Voltage	
		Average voltage	Low voltage
Three scales	Peak	0.144	0.190
	Daytime	0.089	0.118
	Nighttime	0.055	0.072
Two scales	Daytime	0.114	0.152
	Nighttime	0.055	0.072
One scale		0.109	0.145

Prices for connecting users to the electric power transfer and electric power distribution network

		Price (VAT incl.)	
Groups of users	Connected power (kWt)	Length of power supply routing up to 25 m (BGN)	For every additional meter of power supply routing above 25 m (BGN/m)
1	up to 6	444	26
2	from 7 to 15	696	26
3	from 16 to 50	2316	26
4	from 51 to 100	5880	40
5	from 101 to 200	9600	40
6	from 201 to 500	21360	59
7	from 501 to 1000	42270	59
8	above 1000	Individual project	

B. NATURAL GAS

On the territory of the municipality gas-transfer network is still not available.

C. TELECOMMUNICATIONS

Telecommunication services by fixed telephone network in Gotse Delchev municipality are carried out through 4 analogous local automatic telephone exchanges (ATE) – in the villages Breznitsa, Kornitsa (serves also Lazhnitsa village), Bukovo and Banichan (serves also Gospodintsi village) and one junction center in the Municipal center, which serves Gotse Delchev and Mosomishte village, Borovo village, Delchevo village and Dobrotino village. The transfer from the local ATE to the junction center is analogous, and between the junction center and the digital ATE – Blagoevgrad it is 100 % digital.

The price for opening a new fixed telephone line according to the Price list of BTC services is 70 BGN (term for opening – standard 15 days and express less than 15 days); sharp increase of the requests for new telephone lines is observed during the already traditional Easter and Christmas promotions of BTC.

The monthly subscriptions vary from 6,50 BGN to 20 BGN and they include minutes for local and long-distance calls.

Different business plans are available for the business customers in compliance with their needs:

- Business plan BTC Office – the value of the monthly subscription fee varies from 35 BGN to 85 BGN (with included 300 to 1000 minutes for local and long-distance calls)
- Business plan BTC Planet – Business plan for discounts from the prices for international calls to selected destinations. Specially created for business customers that have more international calls.

The mobile operators Mtel Globul and Vivatel have coverage on the territory of the town and the municipality.

In the municipal center wireless and cable internet is provided by Gotse NET Ltd. (<http://www.goce.net>, тел.0751/61218, 60217) , Pirin Com (www.pirin.com), BTC. The companies offer differentiated plans to business and private customers with speed 92kbps to 2048kbps and monthly fee 10 to 100 BGN. ADSL internet is provided by BTC.

D. WATER SUPPLY

Water Supply and Sewerage – Blagoevgrad region serves the water supply and sewerage network of 11 settlements on the territory of the municipality. Drinking water to the population is supplied from three main water sources – catchment in the Tufcha country, catchment in the Barakata country, catchment in the Papaz chair country.

Water supply to the water supply network of Gotse Delchev in the peak hours reaches 472 l/s, which is sufficient to cover the needs of all users.

The following types and lengths of water pipelines are in operation:

- steel pipelines with total length 21 774 m;
- asbestos cement pipelines with total length - 31 096 m;
- polyethylene pipelines with total length 5 615 m.

the total length of the water supply network in the town of Gotse Delchev is 61 075 m. Losses of drinking water are about 30% due to worn and old pipes.

The drinking water purification plant operates on 24-hour mode and it purifies the water for more than 30 thousands residents of the municipality and of some villages in the Garmen municipality.

Water price:

For business entities	0,91 BGN
For domestic needs	0,72 BGN

E. SEWERAGE

The coverage of the sewerage network in the municipality is 95%. Building of sewerage network in some sections of the Delchevo village, Dobrotino village and Breznitsa village is planned. The sewerage system is mixed too, with total length 60 km and the main material for the pipelines is concrete.

Overflow drains are provided for the purpose of reducing the hydraulic load during rainfall. At present the Main external sewerage collector of Gotse Delchev is built partially. The building of Waste Water Treatment Plant is planned.

VII. TRANSPORT

1. Highways and roads



The built road network includes total of 80 km roads, of which the republican road network is represented by:

- First class road – “Simitli – Razlog – Bansko – Gotse Delchev – Ilinden Customs Checkpoint” - 25-km total length on the municipal territory.
- Second class road – “Petrich – Gotse Delchev – Satovcha – Dospat” – 24-km total length on the municipal territory.

The total length of the four-class road networks on the municipal territory is 31 km.

The most significant and respectively with the most heavy traffic is the road Simitli – Ilinden Customs Checkpoint, which connects the municipal center Gotse Delchev and the municipalities Garmen, Satovcha and Hadzhidimovo with the regional center Blagoevgrad and provides the connection with the Republic of Greece.

The average density of the road network for the municipality is 24 km/100 km², compared to 26 km/100km² average density for the region, which is quite acceptable considering the fact that the municipality ranks 12 by territory of the total 14 municipalities in the region.

2. RAILWAY

No railway network is available on the territory of the municipality. The nearest railway stations are in Dobrinishte village – 42 km away (the end station of narrow-gauge railway Septemvri – Dobrinishte) and in the town of Sandanski – 65 km away. No container terminal is available.

3. AIRPORTS

There are no airports on the territory of Gotse Delchev municipality, but the roadways provide access to the national airports, certified by international institutions, and after opening and putting in operation of Ilinden Customs check point, access will be provided to the international airports Kavala and Thessaloniki in Greece. The runways and the technical equipment of the airports allow landing and flying off of the main types of passenger and cargo airplanes all the day round, as well as their technical service.

Military airport is built on the territory of the municipality, but it has not been used since 1993. The airport is property of the Ministry of Defense and the municipality has initiated proceedings to make it a civil airport to serve the needs of the business, tourism and agriculture.

Distances to the airports:

1. Bulgaria

Airport "Sofia" – 230 km
tel: +359 2 937 20 63
fax: +359 2 937 20 10
e-mail: public@sofia-airport.bg
www.sofia-airport.bg

Airport "Varna" – 590 km
tel: +359 52 500 834
fax: +359 52 500 830
e-mail: office@varna-airport.bg
www.varna-airport.bg

Airport "Plovdiv" – 180 km
tel: +359 32 601122
fax: +359 32 601124
e-mail: pdv@mail.bg

Airport "Bourgas" – 480km
tel: +359 56 870 201
fax: +359 56 870 203
e-mail: operation@bourgas-airport.com

2. Greece

- Airport Kavala, Greece – 120 km. trough checkpoint Ilinden

Airport " Kavala International Airport "Megas Alexandros"
Tel: : +30 25910 53271, 53272, 53119
Fax: +30 25910 53280
e-mail: kakvatl@otenet.gr

- Airport Thessalonica , Greece – 287 km. trough checkpoint Ilinden

Летище " Tessaloniki International Airport "Macedonia"
тел: : +30 231 473700 / 2310 473312
факс +30 2310 475555
e-mail: kacmtl@otenet.gr

4. WATERWAYS

No ports are available in Gotse Delchev municipality, but the roads provide access to the national, river and sea ports, certified by the international institutions, as well as to the close ports of the White Sea in Greece.

Distances to the main national ports are:

Sea

Harbor "Varna"
tel: +359 52 69 25 08
fax: +359 52 69 23 08
e-mail: tihomir@port-varna.bg
http://port-varna.bg

- Harbor Varna - 590 km

Harbor "Bourgas"
tel: +359 56 84 22 61
fax: :+359 56 84 01 56
e-mail: ivanov@port-burgas.com
: www.port-burgas.com

- Harbor Bourgas - 480 km

Harbor "Thessalonica "
Tel: +30-2310-444.598
fax: +30-2310-444.585
e-mail: mr-thess@the.forthnet.gr
http://www.thessaloniki-marina.gr

- Harbor Thessalonica- 287, Greece, trough checkpoint Ilinden

Harbor "Kavala "
Tel: +30 2510 223716, 224967
fax: +30 2510 223628
e-mail:
http://www.yen.gr/ports/Html_Files/m_234.asp

**- Harbor Kavala, Greece – 120
trough checkpoint Ilinden**

River

Harbor " Rousse "
tel: +359 82 825 149
fax: +359 82 825 148
e-mail: : pk@elits.rousse.bg
http://www.port.rousse.bg

-Harbor Rousse - 480 km

Harbor "Lom"
тел: : +359 971 4 22 08
факс: : : +359 971 2 69 31
e-mail: port@lom-bg.com
http://port.lom-bg.com

-Harbor Lom - 365 km

5. AUTOMOBILE TRANSPORT

The passenger and cargo transport on the territory of the municipality is carried out by Dinamo AD and by the biggest building companies BKS Ltd., Sherbetov M Ltd., Sgradostroitel, which have on average 5 – 10 trucks with capacity 10/25 tons.

Domestic transport (in the country) and the international transport are organized mainly by local forwarding companies and companies from Blagoevgrad and Sofia.

On the territory of Gotse Delchev municipality the following companies offer taxi services:

1. OK taxi, address: 21, Pirin Str., tel. 6 08 08, average price per km - 0,60 BGN.
2. Steli taxi, address: 1, Nikola Mangushev Str., price per km 0,54 BGN - daytime; 0,59 BGN – nighttime

6. COURIER SERVICES

Courier services in Bulgaria and abroad are provided by:

- "SPEEDY EXPRESS" – 26, Byalo more Str., tel. +359 751 60963
- "DHL Express" - 15, Hristo Botev Str., tel.+359 751 61206, <http://www.dhl.bg>
- "InTime" – tel.+359 751 60110,
- Econt Express – 6, Aleksandar Stamboliyski Str., <http://www.econt.com>

7. Customs services

On the territory of Gotse Delchev municipality operates Customs Bureau, which performs customs control and supervision. The average number of processed documents is 43.

Address: the crossroad on G. Delchev Blvd. – the extension and Panairski livadi,
tel. +359 751 2 89 42 , 2 32 91,
[E-mail:cust-gd@goce.net](mailto:cust-gd@goce.net)

VIII. LOCAL TAXES

1. Types of taxes and fees

The tax system in Bulgaria is centralized and the local authorities are entitled to determine on their own the local taxes and fees.

In the municipal budget enter the revenue from the following local taxes:

1. real estate tax;
2. heritage tax;
3. tax on donations;
4. tax for property acquisition for payment;
5. tax on vehicles;
6. road tax.

The size of the local taxes is determined by acts, adopted by the National Assembly of the Republic of Bulgaria.

The local fees, which are collected on the territory of Gotse Delchev municipality, are:

1. for domestic waste;
2. for use of markets, market places, fairs, sidewalks, squares and streets;
3. for services, provided by nurseries, kindergartens, social homes, camps, hostels and other municipal social services;
4. for yield of quarry materials;
5. for technical services;
6. for administrative services;

7. for grave plots;
8. tourist fee;

The local fees, as well as their size are determined on annual basis by Decision of the Municipal Council of the town of Gotse Delchev. Fees are paid in the specially dedicated for that purpose office "Income from local taxes and fees" with the municipality.

2. Domestic waste fee

The fee is paid for the services of waste collection, transportation and neutralization in dung-hills or other facilities for domestic waste, as well as for the maintenance of the cleanness of the areas for public use in the settlements. The size of the fee is determined for each service individually – waste collection and waste transportation; neutralization of domestic waste in dung-hills or other facilities; cleaning the public areas. Annually the Municipal Council specifies the size of the fee on pro mil basis, which is different for the different settlements, calculated on the tax value of the estate.

The fee is paid by:

1. the property owner
2. the user – in case of established real right of use
3. the concessionary – in case of awarded special right of use – concession.

3. Fee for use of marketplaces, fairs, sidewalks, streets, roads and terrains with other functions

The fee is paid for the use of sidewalks, squares, streets, places where markets are organized (through the municipal company "Municipal markets"), as well as fairs (the traditional annual fair), as well as terrains with other functions, which are municipal property. The fee is paid by physical persons and legal entities that use the service depending on the zone, where the terrains are located.

4. For services, provided by the registrar office, the following fees are paid:

1. for issue of a certificate of heirs – 2.00 BGN;
2. for issue of a certificate of identity of names– 1.00 BGN;
3. for issue of a certificate that no birth entry or death entry is made – 1.00 BGN;
4. for issue of duplicates of a birth certificate or a marriage certificate, as well as a copy of a death certificate– 1.50 BGN;
5. for issue of a marital status certificate – 1.50 BGN;

6. for issue of a certificate of ties of relationship– 1.50 BGN;
7. for address registration and/ or issue of a certificate for permanent or present address – 1.00 BGN;
8. for certification of an invitation – declaration for a visit of a foreigner in the Republic of Bulgaria – 7.00 BGN;
9. for certification of an invitation – declaration for private visit in the Republic of Bulgaria of a person, living abroad, whose parents or one of them is of Bulgarian nationality – 2.00 BGN;
10. for legalization of civil status documents intended for foreign countries – 3.00 BGN;
11. for other certificates at citizens' request – 1.00 BGN;
12. for copies of documents – 1.00 BGN

The term for the issue of the documents is from 1 to 5 days. No prices for express issue of documents have been approved by the Municipal Council.

5. Permits and licenses

For permits for trade in tobacco products and licenses for trade in wine, products of grape and wine, spirit, distillates and alcoholic drinks, first initial fee is collected for the issue of a permit or license and then annual fee for running the business as follows:

1. trade in tobacco products according to art. 30, pg. 1 of the Tobacco and Tobacco Products Act, as follows:
 1. warehousing, storage, wholesale of products of grape, spirit, distillate and alcoholic drinks
 2. retail trade in products of grape, spirit, distillate and alcoholic drinks
 3. trade in alcoholic drinks in public catering and entertainment establishments
 4. temporary stand for sale of products from grape, spirit, distillate and alcoholic drinks on fairs, advertising campaigns of companies, etc. – day fee for exercising the right

6. Fees for yield of quarry materials:

The fees are determined individually for every type of quarry material on the gross yield per m³ or per ton:

1. according to the production records, which every quarry must keep;

2. on the volumes, mentioned in the temporary or single permits for yield of quarry materials.
3. for river and quarry sand, gravel and ballast – 0.70 BGN/m³;
4. for sand- clayey materials for manufacture of bricks, roof-tiles and covers, interior and exterior plaster - 0.50 BGN/m³;
5. clay - 0.60 BGN/m³;
6. cyclopean, crushed and mosaic stone of sediment, eruptive, sand and other rocks - 0.60 BGN/m³;
7. ordinary stone from lime-sand deposits, limestone, travertite, dolomite, marble, aragonite, shell limestone, conglomerates and other for interior and exterior covering - 0.65 BGN/m³;
8. limestone, marls, calcites for yield of lime - 0.50 BGN/m³;
9. for stone intended for:
 - a) paving stone - 0.60 BGN/m³;
 - b) rolls, mill-stones, whetstones - 0.90 BGN/m³;
 - c) baseboards, cornices, stairs and other from sandstone, marls, marble and other from sediment rocks - 0.65 BGN/m³;
 - d) baseboards, cornices, stairs and other from granites, syenite, granite, basalts, diorite, rhyolite, andesite, and other from hard eruptive rocks - 0.65 BGN/m³;
 - д) slabs for sidewalks and roofs - 0.50 BGN/m².

7. Other fees:

№	Type of service	UNIT PRICE
1.	Issue of a certified excerpt from decisions, reports, etc.	1.00 BGN/page
2.	Issue of a certificate of common use	2.00 BGN
3.	Issue of a certificate	0.50 BGN
4.	Issue of a certificate for debts to the municipality	2.00 BGN
5.	Copier services	0.20 BGN/ page
6.	Declaration of entering into the card-index	1.00 BGN
7.	Issue of accommodation order for a lodging, terrain or room	0.50 BGN
8.	Issue of order for determination of housing rent, an annex to rent contract	0.50 BGN
9.	Rent contract /standard/	0.50 BGN
10.	Issue of a duplicate of diploma: <ul style="list-style-type: none"> - for completed grade; - for primary education; - for high education 	2.00 BGN 3.00 BGN 5.00 BGN
11.	Certification of copies of acts, contracts, orders, decisions, reports and other documents	0.50 BGN/page
12.	Filling in exhibits to tax forms	1.00 BGN
13.	Issue of a form UP-2	1.00 BGN
14.	Issue of a form 30	1.00 BGN

Nº	Type of service	UNIT PRICE
15.	Approval of executive documents	from 20.00 to 100.00 BGN /depending on the object value/
16.	Certificate of tolerance based on § 16, pg.1 of Territorial Planning Act for buildings, built until 07.04.87	20.00 BGN
17.	Certificate of actually identified parts of buildings / art.202 of Territorial Planning Act/	20.00 BGN
18.	Certificate of remoteness of a commercial object from health establishments, kindergartens and schools	20.00 BGN

IX. COMPANIES

1. Number of companies, registered in the Gotse Delchev municipality (data from the Bulstat register 2005) – 3648 companies

Total number of enterprises from the non-financial sector in the Gotse Delchev municipality according to the number of employees:

Data: NSI, 2005

	Microcompanies (up to 10 employees)	Small companies (11-50)	Medium companies (51-100)	101-250 employees	Big companies (251+)	Total
Gotse Delchev municipality	1057	72	14	9	5	1157
Blagoevgrad region	9796	803	163	107	29	10898

2. MAIN DATA ABOUT STRUCTURE-DECIDING COMPANIES ON THE TERRITORY OF GOTSE DELCHEV MUNICIPALITY

2.1 TEXTILE INDUSTRY

Data about the company	
Company name	PIRIN TEX LTD.
Address	2900 Gotse Delchev, 50, Drama Str.
Phone	+359 751 60506; 69113

Fax	+359 751 60509
e-mail	info@pirintex.com
web site	
Company manager *Name;	Bertram Rollman
brief information about education and professional experience;	Special technical education, 19 years, General manager of Katerina company – Katerini – Greece, 13 years General manager of PIRIN TEX Ltd., town of Gotse Delchev
foreign language (speak/write)	German, Greek, English, Bulgarian
Contact person	Bertram Rollman
*Name;brief information about education and professional experience; foreign language (speak/write)	
Year of incorporation	1993
Branch of industry	Light industry, tailoring
Main business	Manufacture and sale of clothes
End product	Classic-type men's jackets Classic-type men's trousers Men's sport trousers
Implemented technologies and technological opportunities	Modern machines for manufacture of men's clothes: CAD : grading, matrix optimization, plotting; CAD-cutting: machines for automatic cutting by pattern: Assyst – Bullmer, Veit- alignment tables, fixing presses Kannegieser; Tailoring workshop: sewing machines and automates of the make: Duerkopp, Juki, Pfaff, ASS, Conti Completti, Strobel etc.; Ironing workshop – Brisay, Indupress, Veit, Pridal; Own trademark – Rollman Fashion
Ownership (%) * State-owned, private, municipal	100 % private property – Rollman and Partner Fashion Management GmbH - Germany
Number of employees:	2400
Gross capital (EUR)	-
turnover (EUR) :	-
Export share (%) :	90%
Use of capacity (%) :	100%

<u>Data about the company</u>	
Company name:	JAMP Ltd.
Address	2900 Gotse Delchev, 50, Drama Str.
Phone	+359 751 60356
Fax	+359 751 60357
e-mail	
web site	

Company manager *Name;	Emanuil Gulgudinas
brief information about education and professional experience;	
foreign language (speak/write)	Greek, English, Bulgaria
Contact person *Name; brief information about education and professional experience;	Borislav Almishev Economical education Financial director
foreign language (speak/write)	Greek
Year of incorporation	2000
Branch of industry	light industry, tailoring
Main business	manufacture of clothes, job manufacturing
End product	Knitwear
Implemented technologies and technological opportunities	The company has modern machines for manufacture of clothes
Ownership (%) * State-owned, private, municipal	100 % private property
Number of employees:	110
Gross capital (EUR)	-
turnover (EUR) :	-
Export share (%) :	96%
Use of capacity (%) :	70%

<u>Data about the company</u>	
Company name	ORADEN Ltd.
Address	2900 Gotse Delchev, 4, Vranya Str.
Phone	+359 751 60255
Fax	+359 751 60255
e-mail	oraden@gocenet.net
web site	www.oraden93.com
Company manager *Name;	Kostadin Vasilev Orasov
brief information about education and professional experience;	Higher education – chemical engineer 30 years professional experience
foreign language (speak/write)	Italian - speak

Contact person *Name;brief information about education and professional experience; foreign language (speak/write)	Ana Georgieva Daskalova Higher education - economist 4 years experience as an accountant
Year of incorporation	1993
Branch of industry	Light industry, tailoring
Main business	Job manufacturing – stitching upper parts of shoes and insoles
End product	100% job manufacturing - upper parts of shoes and insoles
Implemented technologies and technological opportunities	None
Ownership (%) * State-owned, private, municipal	100 % private property
Number of employees:	180
Gross capital (EUR)	-
turnover (EUR) :	-
Export share (%) :	70 %
Use of capacity (%) :	80 %

2.2 SHOE INDUSTRY

<u>Data about the company</u>	
Company name	PIERIK LTD.
Address	2900 Gotse Delchev, Panairski livadi Str. – extension
Phone	+359 751 60631,60635
Fax	+359 751 60633
e-mail	pierik@mbox.contact.bg
web site	www.pierikshoes.com
*Name; brief information about education and professional experience; foreign language (speak/write)	Margarita Simeonova
Contact person *Name; brief information about education and professional experience; foreign language (speak/write)	Margarita Simeonova
Year of incorporation	1994
Branch of industry	Light industry - show
Main business	Shoe manufacture
End product	Manufacturing of high quality women and men

	footwear of natural materials, Italian design
Implemented technologies and technological opportunities	-
Ownership (%) * State-owned, private, municipal	100 % private property
Number of employees:	554
Gross capital (EUR)	-
turnover (EUR) :	-
Export share (%):	92%
Use of capacity (%) :	% -

2.3 CHEMICAL INDUSTRY

<u>Data about the company</u>	
Company name	PIRINPLAST AD
Address	2900 Gotse Delchev, Promishlena zona
Phone	+359 751 69022
Fax	+359 751 60616
e-mail	pirplast@gocenet.net
web site	www.pirinplast.com
Company manager *Name;	Eng. Stoyan Vakareev – Executive Director
brief information about education and professional experience;	Higher technical education Professional experience – 21 years
foreign language (speak/write)	Italian /write and speak/, English/speak/
Contact person *Name;brief information about education and professional experience; foreign language (speak/write)	Eng. Stoyan Vakareev – Executive Director
Year of incorporation	1974
Branch of industry	Chemical industry
Main business	Manufacture of plastic articles
End product	Corrugated cardboard; Polymer networks; Plastic products for home use;
Implemented technologies and technological opportunities	Extrusion, moulding, thermal shaping of polymers; Implemented quality management system ISO 9001:2000
Ownership (%) * State-owned, private, municipal	100 % private property
Number of employees:	220
Gross capital (EUR)	-
turnover (EUR) :	-
Export share (%):	75 %
Use of capacity (%) :	80 %

2.4 FOODS AND BEVERAGES INDUSTRY

Data about the company	
Company name	NATALIA M Ltd.
Address	2900 Gotse Delchev, Dunav Str. – the extension
Phone	+359 751 60025, 60026
Fax	+359 751 60027
e-mail	natalia_mm@scame.it
web site	
Company manager *Name;	Nataliya Ilieva Petriliyska
brief information about education and professional experience;	High education Since 1990 in the private business
foreign language (speak/write)	Italian /speak and write/
Contact person *Name; brief information about education and professional experience; foreign language (speak/write)	Nataliya Ilieva Petriliyska
Year of incorporation	1993
Branch of industry	Food and Beverages Industry
Main business	Manufacture of toys for Kinder Surprise chocolate eggs
End product	Toys for chocolate eggs
Implemented technologies and technological opportunities	Moulding, assembly of plastic parts, drawing,
Ownership (%) * State-owned, private, municipal	100 % private property
Number of employees:	850
Gross capital (EUR)	-
turnover (EUR) :	-
Export share (%) :	100 %
Use of capacity (%) :	100 %

Data about the company	
Company name	Gotse Delchev BT AD
Address	2900 Gotse Delchev, 12, Tsaritsa Yoanna Str. 12
Phone	+359 751 60511
Fax	+359 751 60513
e-mail	gdbt@gocenet.net
web site	
Company manager *Name;	Eng. Ivan Atanasov Terziev
brief information about education and professional experience;	Higher education – Technical University – Sofia, Mechanical Engineer, major: Metal Technology 2001-2005 – Gotse Delchev BT AD – Executive Director 1990-2001 – Gradets Cooperative, Ognyanovo village

foreign language (speak/write)	– Chairman 1985-1990 – Agricultural Complex, Garmen village and Municipal Council – Garmen village – Deputy Chairman 1974-1985 – Factory for USW radios – Field Manager French and Russian (speak and write)
Contact person *Name; brief information about education and professional experience; foreign language (speak/write)	Eng. Ivan Atanasov Terziev
Year of incorporation	1994
Branch of industry	Food industry
Main business	Purchasing, industrial processing, preparation for export and trade in tobacco in Bulgaria and abroad
End product	Processed fermented oriental tobacco leaves in bales and boxes
Implemented technologies and technological opportunities	Implemented technologies for industrial processing of tobacco
Ownership (%) * State-owned, private, municipal	78 % state property 22 % private property
Number of employees:	337
Gross capital (EUR)	-
turnover (EUR) :	-
Export share (%) :	40 %
Use of capacity (%) :	70 %

2.5 OTHER INDUSTRY

<u>Data about the company</u>	
Company name	ORBEL AD
Address	2900 Gotse Delchev, 73, Gotse Delchev
Phone	+359 751 60553
Fax	+359 751 60554
e-mail	orbel@pirincom.com
web site	www.orbel-bg.com
Company manager *Name;	Eng. Stoyan Stefanov Markov
brief information about education and professional experience;	Higher technical education
foreign language (speak/write)	German

Лице за контакт *Name; brief information about education and professional experience; foreign language (speak/write)	Eng. Stoyan Stefanov Markov
Year of incorporation	1965
Branch of industry	Light industry
Main business	Manufacture and trade in zippers and other textile haberdashery, accessories, jewellery
End product	Zippers, Velkro
Implemented technologies and technological opportunities	License from Opton Switzerland for manufacture of zippers and sticking tapes VELKRO
Ownership (%) * State-owned, private, municipal	95 % private property 5 % state property
Number of employees:	158
Gross capital (EUR)	-
turnover (EUR) :	-
Export share (%) :	14 %
Use of capacity (%) :	-

Data about the company	
Company name	INTERPRED PARTNER Ltd.
Address	2900 Gotse Delchev, Hristo Matov Str. №5
Phone	+359 751 60663
Fax	+359 751 60668
e-mail	office@zebra-paper.com
web site	www.zebra-paper.com
Company manager *Name;	Ivan Belyanov
brief information about education and professional experience;	Higher education in Economics – D. Tsenov Academy of Economics – town of Svishtov Experience in the management of companies, operating in the field of building, manufacture, commerce and services.
foreign language (speak/write)	Rosen Dumanov Higher education in Economics – D. Tsenov Academy of Economics – town of Svishtov Experience in the management of companies, operating in the field of building, manufacture, commerce and services.
Contact person *Name; brief information about education and professional experience; foreign language (speak/write)	Stanislav Shehinov Higher education in Economics – D. Tsenov Academy of Economics – town of Svishtov English (speak and write)

Year of incorporation	1994
Branch of industry	Light industry – processing of tissue (cellulose wrapping paper)
Main business	Manufacture of tissue products
End product	Toilet paper, kitchen rolls, napkins;
Implemented technologies and technological opportunities	Implemented technology of micro-crimping and color lamination of tissue
Ownership (%) * State-owned, private, municipal	100 % private property
Number of employees:	93
Gross capital (EUR)	-
turnover (EUR) :	-
Export share (%) :	
Use of capacity (%) :	65 %

Data about the company	
Company name	ET ASTER - C
Address	2900 Gotse Delchev, Polkovnik Drangov Str. 34B
Phone	+359 751 61031
Fax	+359 751 61031
e-mail	aster_s@abv.bg
web site	
Company manager *Name;	Eng. Todor Stefanov Ivanov
brief information about education and professional experience;	Higher education – University of Forestry and Timber Industries – Sofia, Landscape Architect Major Building and Architecture 30 year experience in the field of local self-government, building, gardening, ecology
foreign language (speak/write)	French (speak and write)
Contact person *Name; brief information about education and professional experience; foreign language (speak/write)	Eng. Todor Stefanov Ivanov
Year of incorporation	1990
Branch of industry	Manufacture, building, design, services
Main business	Design, building, manufacture of building materials, design from marble and flowers, construction of green areas, flower growing, ecology
End product	Manufacture of building materials, green areas, flower production
Implemented technologies and technological opportunities	-
Ownership (%)	100 % private property

* State-owned, private, municipal	
Number of employees:	48
Gross capital (EUR)	-
turnover (EUR) :	-
Export share (%):	30 %
Use of capacity (%) :	70 %

X. EXPANSIONS OF EXISTING COMPANIES DURING THE RECENT 3 YEARS

1. PIRIN TEX LTD.

<u>Branch</u>	<u>End product</u>	<u>Year</u>	<u>Number of new job positions</u>
Light industry, tailoring	Classic-type men's jackets and trousers Men's sport trousers	2004	199
		2005	-
		2006	-

2. JAMP LTD.

<u>Branch</u>	<u>End product</u>	<u>Year</u>	<u>Number of new job positions</u>
Light industry, tailoring	Knitwear	2004	-
		2005	3
		2006	7

3. ORADEN Ltd.

<u>Branch</u>	<u>End product</u>	<u>Year</u>	<u>Number of new job positions</u>
Light industry, tailoring	Job manufacturing – upper parts of shoes, insoles	2004	10
		2005	20
		2006	8

4. PIERIK LTD.

<u>Branch</u>	<u>End product</u>	<u>Year</u>	<u>Number of new job positions</u>
Light industry – shoes	High quality men's and ladies' footwear from natural materials, Italian design	2004	-
		2005	100
		2006	40

5. ORBEL AD

<u>Branch</u>	<u>End product</u>	<u>Year</u>	<u>Number of new job positions</u>
Light industry	Zippers, sticking tapes VELKRO, accessories, jewelry	2004	-
		2005	-
		2006	1

6. PIRINPLAST AD

<u>Branch</u>	<u>End product</u>	<u>Year</u>	<u>Number of new job positions</u>
Chemical industry	Corrugated cardboard; Polymer networks; Plastic products for home use;	2004	2
		2005	8
		2006	12

7. INTERPRED PARTNER Ltd.

<u>Branch</u>	<u>End product</u>	<u>Year</u>	<u>Number of new job positions</u>
Light industry - tissue processing	Toilet papers, kitchen rolls, napkins, face towels	2004	11
		2005	22
		2006	20

8. NATALIYA MM Ltd.

<u>Branch</u>	<u>End product</u>	<u>Year</u>	<u>Number of new job positions</u>
Food and beverages industry	Toys for chocolate eggs	2004	50
		2005	76
		2006	17

9. GOTSE DELCHEV BT AD

<u>Branch</u>	<u>End product</u>	<u>Year</u>	<u>Number of new job positions</u>
Food industry	Processed fermented oriental tobacco leaves in bales and boxes	2004	294
		2005	249
		2006	231

10. ET ASTER - C

<u>Branch</u>	<u>End product</u>	<u>Year</u>	<u>Number of new job positions</u>
Manufacture,, building, design, services	Manufacture of building materials, creation of green areas, flower production	2004	4
		2005	35
		2006	9

XI. CLOSED DOWN COMPANIES

During the recent 10 years the following companies have been closed down: Balgarka EAD, Nevrokop EAD, Orlyak EAD, Zetor Ltd.

XII. TRADE UNIONS

In the Gotse Delchev municipality there are structures of KNSB (Confederation of the Independent Trade Unions in Bulgaria) and Podkrepa, which carry out the activities of representation and protection of the rights and interests of their members through participation in tripartite bodies and structures, collective agreements, protection of job positions and employment promotion, provision of expert service on the issues of labour law, occupational health and safety.

Contact Details:

Podkrepa Confederation of Labour

Seres Str №8, tel.0751/27076, 24024; e-mail:

srs_gocedelchev@podkrepa.org

KNSB – 20, Solun Str., 0751/23527

XIII. SPECIAL INCENTIVES, WHICH THE MUNICIPALITY PROVIDES TO THE BUSINESS

1. Special incentives

1. Publicity and promptness of providing information about its intentions, programmes, etc., connected with the attraction and the necessity of investment resources;
2. Shorter terms than the terms, specified in the Regulations for processing and issue of documents for technical services on the part of the employees from the Municipal administration;
3. Provision of preferences for investors, as provided in the Investments Promotion Act when purchasing municipal property, etc.;
4. Support and assistance for the relations with the companies from the sectors: Water Supply and Sewerage, Electric Power Supply, Agriculture and Forests Service, central authorities.

5. Preparedness of the municipality to apply the principles of public & private partnerships (awarding concessions, creation of joint ventures, companies).
6. A specially designated officer will provide support to the investors for the issue of different permits, coordination between the Regional Directorate of the National Building Supervision, Water Supply and Sewerage, Electricity Distribution and other institutions and services

2. Information center

The administrative-territorial and legal services are provided by the Information center for servicing citizens and business entities, located in the building of the Gotse Delchev municipality.

3. Organization supporting bussines

Business incubator

The Business incubator – Gotse Delchev is a non-government non-profit organization, providing support to the development of small-size, medium-size and family business and agricultural producers in the Gotse Delchev region.

The business incubator assists for the generation of new ideas, private entrepreneurship promotion, information exchange and know-how acquisition from well-developed market societies for the purpose of opposing the unemployment in the region, supporting the increase of the general standards of living and labor conditions for the people from the region. It was put in operation in 1998 with the support of the UNDP (the United Nations Development Programme and the Gotse Delchev municipality.

Contacts:

Business incubator

4 Skopie Str, 2900 Gotse Delchev, tel. +359 751 60404, fax. +359 751 60403, www.bi-gd.org , bi-gd@gocenet.net, bi@gocenet.net

Chamber of commerce and industry

It is independent association supporting and improving business activities. It protects the commercial interests of the members. Chamber assists for expanding the participation of companies in international economical cooperation, makes contacts with governmental institutions.

Contacts:

***5 Iliia Batakliiev Str, 2900 Gotse Delchev
tel: +359 751 608 80***

XIV. MAIN EMPLOYERS IN THE SPHERE OF SERVICES

Main employers in the sphere of services in the municipality are: BKS Ltd., Sherbetov-M Ltd., Sgradostroitel AD, Bulgarian Post AD, BTC AD, Electricity Distribution AD, the Municipal administration, private companies from the commercial sector.